



5599 Highway 31 West  
Portland, TN 37148  
(615) 325-2774

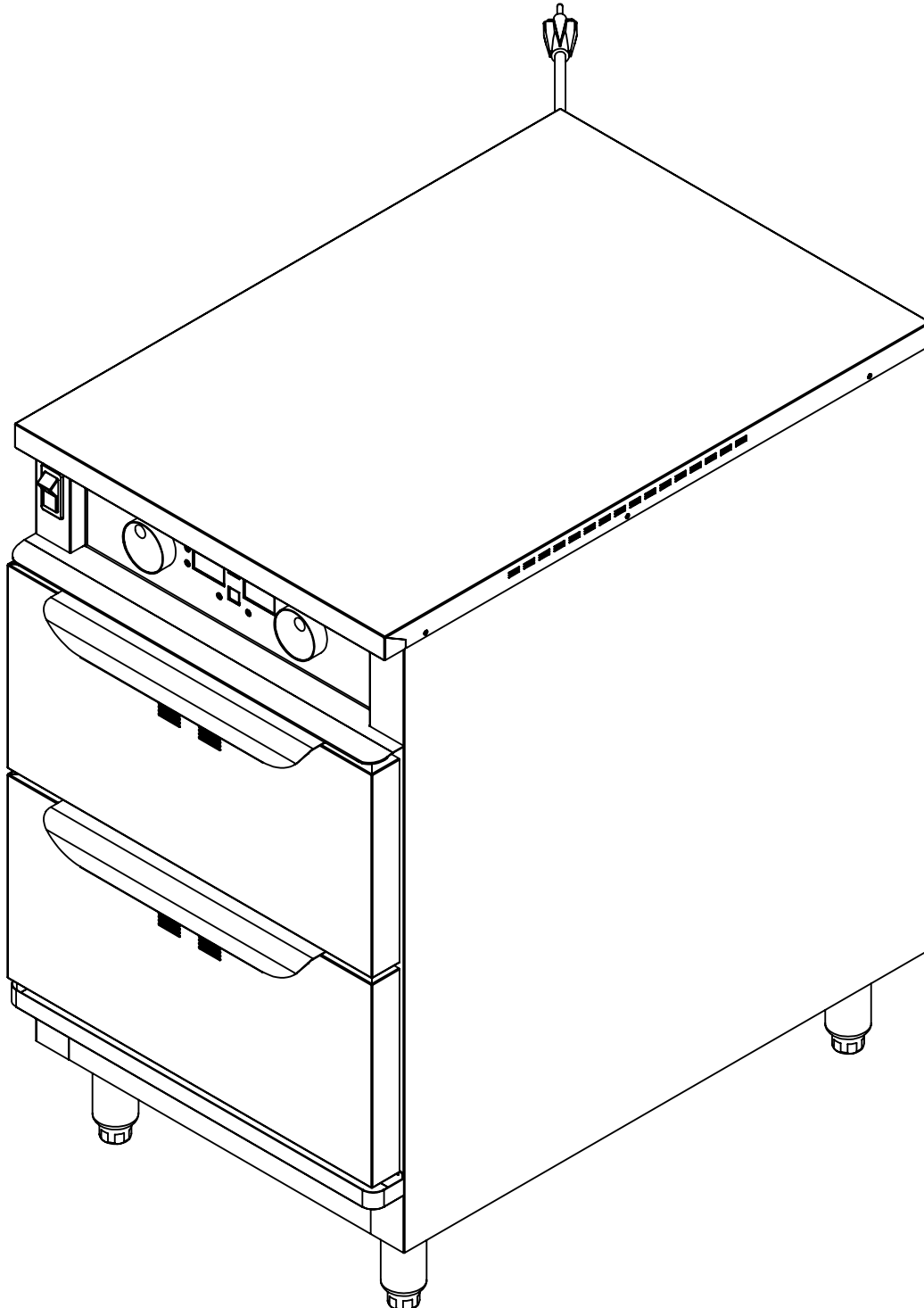
# PHTT-2DR-6-240V

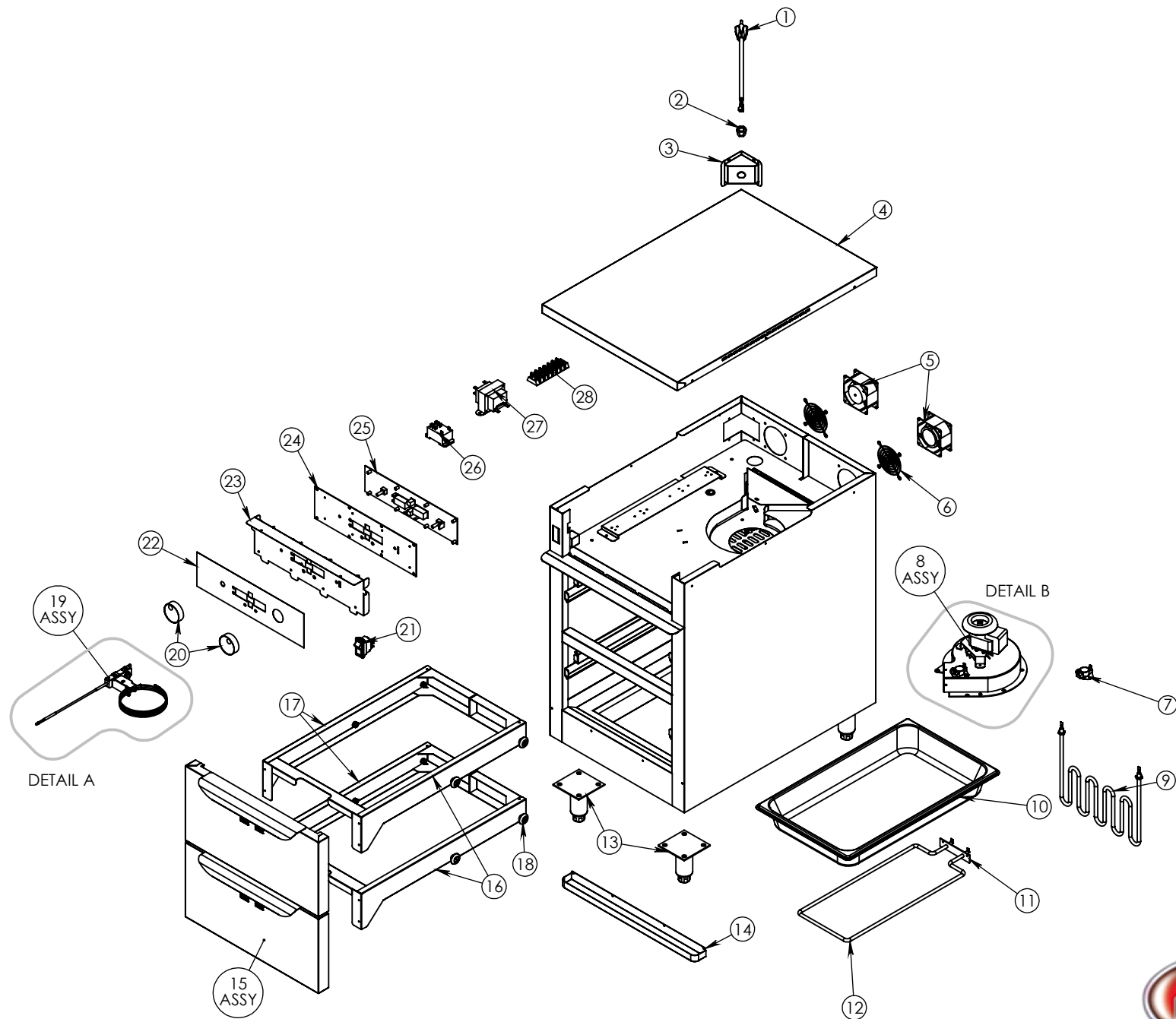
Pg.1 . TITLE PAGE

Pg.3 . DETAIL

Pg.2 . PHTT-2DR-6

Pg.4 . PHTT-2DR-6 BOM





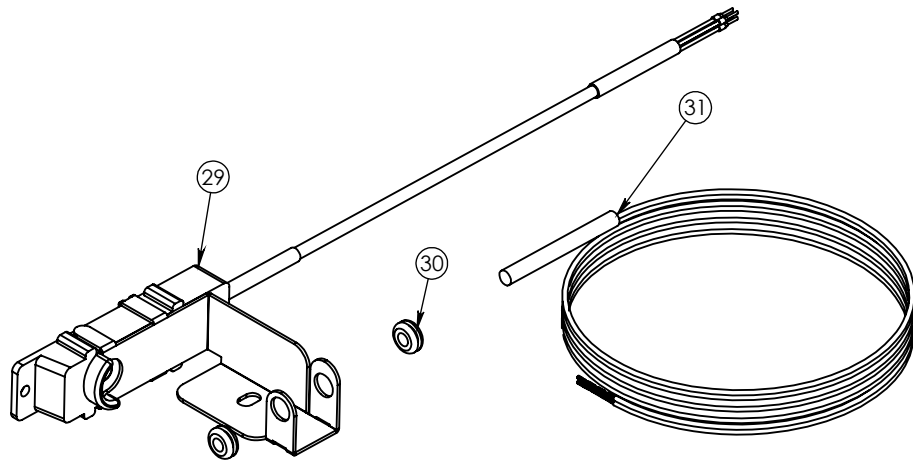
DRAWING #: **PHTT-2DR-6**

DESCRIPTION: **HEATED DRAWER WITH MOISTURE**

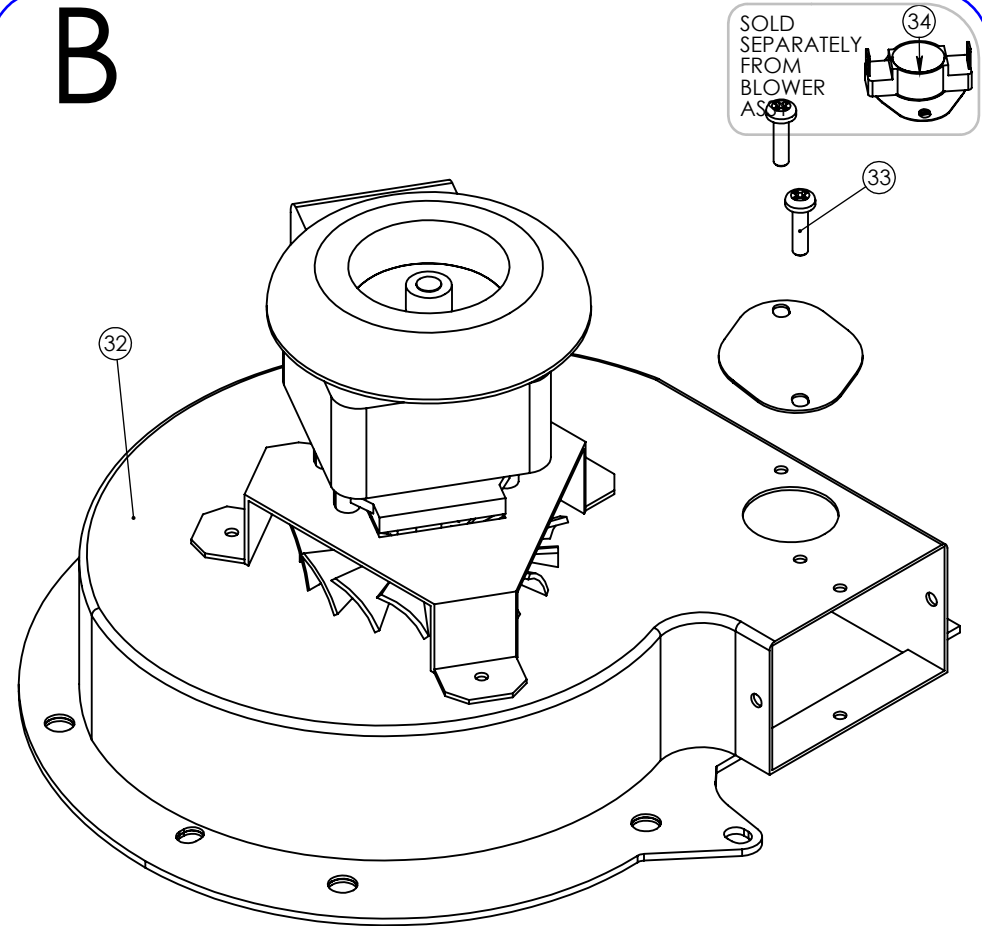
DRAWN BY: A.L.

LAST SAVED BY: andrew82

# A



# B



ITEM NO.	QTY.	PART NO.	DESCRIPTION
1	1	CRDSET10-220	CORD 12' 220V 6-15P 14GA 3WR 15AMP
2	1	BSH STRN 3	STRAIN RELIEF FOR 15 AMP CORD
3	1	69729	HUMI TRI-CORD BRCKET DD .672X .750
4	1	27086	HDW-MT-1N OUTSIDE TOP
5	2	FAN PHTT 230	SUNON 230V FAN,80 X 80 X 38MM
6	2	GRD FAN	FAN GUARD
7	1	SNAP DISC 210-250	HI-LIMIT SWITCH NC
8	1	Z-600-4103(INLUDES 32-33)	BLWR-240-50 WITH SNAP DISC 150-130
9	1	EL1250-220HT	ELEMENT 1250 WATT 220 VOLT 8" HT
10	1	PAN 12X20X2.5	FULL SIZE SS PAN, 2-1/2" DEEP
11	1	GSKT HLC	SILICONE SPONGE 1/16" D/C W/PSA
12	1	EL500-220-A16	ELEMENT 500 WATT 220 VOLT 16" A
13	4	Z-600-4755	LEGS STAINLESS STEEL ADJ 4"-6"
14	1	82504	HDW-MT-1N DRIP TROUGH
15	2	Z-301-5045(INLCUDES 16-18)	PHTT-2W6 DOOR W/DRW ASSY VNT HWF
16	2	83502	PHTT-2DR-6 SIDE PAN HOLDR RIGHT
17	2	83503	PHTT-DR-6 SIDE PAN HOLDR LEFT
18	8	RLR CON SS	CONVEX ROLLER SS 1-1/16OD
19	1	Z-800-2042(INCLUDES (29-31)	PHTT SENSOR MOUNT PLATE ASSY
20	2	KNB PHTT	KNOB, DIMPLE TURN
21	1	SWH RCK E1	SWITCH NON-LT ROCKER 125/250V 20AMP
22	1	CNTRL PNL PHTT	OVERLAY FOR CLYMATE IQ (PHTT)
23	1	82498	HDW-MT-1N CONTROL PANEL
24	1	80030	CNTRL PANEL PRECISE HUMITEMP
25	1	CNTRL BRD-PHTT STD	CONTROL BOARD FOR STANDARD PHTT
26	1	RLY 30AMP DPDT 240	30AMP PANEL MOUNT RELAY,2 POLE 240V
27	1	TRNS-240-120-40VA	TRANSFORMER 240V-120V 40 VA
28	1	TRM BLK RTH	TERMINAL BLOCK -6 POLES
29	1	Z-600-3850	PHTT SENSOR NO T PROBE
30	2	GRMT-HT-3-16	SILCONE GROMMET 3/16ID X 7/16OD
31	1	THERMISTOR-PROBE	THERMISTOR PROBE NTC
32	1	BLWR-240-50	BLOWER ASSEMBLY 240V, 50HZ
33	2	S8-32X10 CTS	SCRW 8-32x5/8 PH CUT 410
34	1	SNAP DISC 150-130	COOL DOWN SNAP DISC F150 OPEN RISE



DRAWING #: **PHTT-2DR-6**

DESCRIPTION: **UNIVERSAL SERVER**

DRAWN BY: A.L.

LAST SAVED BY: andrew82