

Food Warming Equipment Company, Inc.
P.O. Box 1001 Crystal Lake, IL 60039-1001

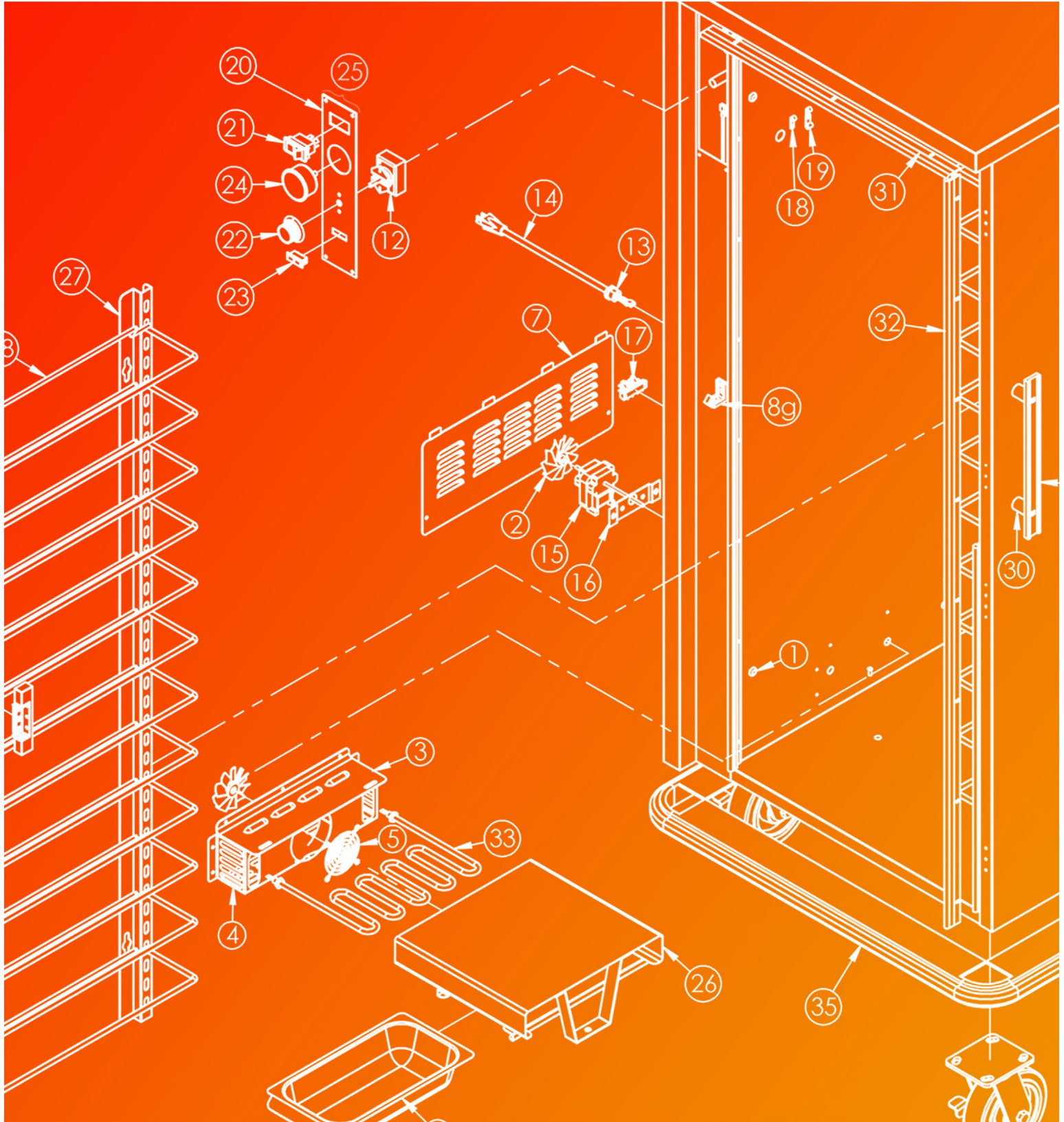
Manufacturing Facilities
5599 Highway 31 West • Portland, TN 37148

Effective Date: February 14, 2020
Version: PPL0120

Parts Price List 2020

orders@fweco.net | 800-222-4393 | www.fweparts.com

2020



FOOD WARMING EQUIPMENT COMPANY, INC
COOK | HOLD | TRANSPORT | SERVE | REFRIGERATION | BARS



Part Number	Description	List Price
4009	BRACKET MOTOR MNT MTR JK120 92	\$25.00
4010	TS-1826-18 UPRIGHT	\$181.00
4231	WATER-PAN 9X20X1.6 PH B4 2009	\$196.00
4449	WATER PAN 9X26X1.5 MT	\$162.00
4465	HLC HEAT DEFLECTOR	\$74.00
5561	THERMOSTAT RETENTION STRAP - HDM	\$73.00
51230	S-6920 GERMINATOR TRAY	\$80.00
52505	LCH THERMOSTAT MOUNTING BRACKET	\$9.00
53524	HLC-8 RACK @ 2.625 SPACING	\$175.00
54864	CNTRL-PNL-HUMI-TEMP-AL (BENT)	\$71.00
55881	JZHH-144 CONTROL COVER PLATE	\$34.00
56109	PHTT-6 KFC LEXAN DOOR HINGE PLATE	\$66.00
56691	HLC-8 RACK 12X20 @ 2.625	\$179.00
57541	PHTT-KFC STRAINER	\$73.00
57613	MAXI-SLIDE STRIKE GSKS DOOR 1.25"	\$38.00
59012	SNEEZE GUARD MOUNTING BRACKET	\$35.00
59679	HNG SET ANGLE SPRING CAP	\$69.00
69194	S-6920 GERMINATOR SHLF DOUBLE LITE	\$141.00
70097	PHTT-6 KFC LEXAN PC DOOR 1 IN HOLE	\$89.00
70110	PHTT-5P-KFC LEXAN DOOR 1" HOLE	\$191.00
80027	HNG L/O FLANGE OUT, HT @ 2.0625	\$50.00
80610	BRACKET MOTOR MNT FOR BAY MTR	\$59.00
80641	PHTT-6P-KFC FIELD FIX SIDE PRS GSK	\$72.00
80642	PHTT-6P-KFC FIELD FIX T-B PRS GSK	\$69.00
82152	JZH-6UBT 18X26 FXD RACK 3" SPACNG	\$172.00
82293	PERFORATED SHELF 20.750X27.329	\$137.00
82705	PTS-0709-66HA RACK 3" RETRO FC-442	\$181.00
82717	PERFORATED SHELF 21.00X25.750	\$183.00
82765	PERFORATED SHELF 21.250X28.125	\$199.00
84174	PERF SHELF 20.875X2250	\$179.00
84249	PERF SHELF 13X26 SLIM	\$147.00
84378	PERF SHELF 20.875X2250 NTCH FLNG	\$200.00
BI-4-20X12CS	1-4-20 X .75 CARRIAGE BOLT, 18-8SS	\$1.00
BI-4-20X32NZ	1-4-20 X 2 HEX HD SHLDR BOLT	\$1.00
BINDING POST 8-32 X 1-4	ALUMINUM BINDING POST 8-32 X 1/4"	\$1.00
BIT JOBBER31	DRILL BIT JOBBER #31	\$5.00
BLD FAN 2.5S	FAN BLADE 2.5" ALUMINUM	\$11.00

Part Number	Description	List Price
BLD FAN 4.5B	FAN BLADE 4.5" ALUMINUM	\$39.00
BLD FAN 6AC	BLADE AC 6" PLASTIC	\$8.00
BLD FAN AL	FAN BLADE 3" ALUMINUM	\$13.00
BLD FAN FZ	FAN BLADE PLASTIC 5-1/2" 4-BLADES	\$61.00
BLWR-120-60	BLOWER ASSEMBLY 120V, 60HZ	\$333.00
BLWR-120-60S	BLOWER ASSY 120V, 60HZ SHORT STACK	\$350.00
BMPR INSERT	BUMPER INSERT BLACK VINYL	\$1.00
BSH .75 LIQUID TIGHT	LIQUID TIGHT BUSHING 3/4 HOLE SIZE	\$6.00
BSH 1	SNAP IN BLACK SB-1000-12	\$1.00
BSH STRN 3	STRAIN RELIEF FOR 15 AMP CORD	\$1.00
BSH STRN 4	STRAIN RELIEF FOR 20 AMP CORD	\$2.00
BSH-1-2	SNAP-IN WHT SB-500-6	\$2.00
BSH-3-4	WHITE-BLACK SB-750-9	\$1.00
BSKT OVEN	BASKET WIRE 13"X25-3/4"X2-1/2"	\$138.00
CLP DIXELL	MOUNTING CLIPS FOR DIXELL CONTROL	\$5.00
CLP SHLF J	WIRE SHELF SUPPORT CLIPS	\$5.00
CLP-AL1-4	CLAMP 1-4" ALUM	\$1.00
CLP-AL3-8	CLAMP 3-8" ALUM	\$1.00
CNTRL BRD LCH PRGM	CONTROL BOARD PROGRAMABLE FOR LCH	\$440.00
CNTRL BRD LCH PRGM 240	CONTROL BOARD PROGRAMABLE 240V LCH	\$310.00
CNTRL BRD-BD LCH 4.3 G2	CONTROL BOARD/BONDED OVERLAY 4.3" G	\$1,310.00
CNTRL BRD-PHTT	CONTROL BOARD FOR PHTT	\$836.00
CNTRL BRD-PHTT 12	CONTROLLER FOR PHTT W/ HUMID VENT	\$932.00
CNTRL BRD-PHTT 5	IONCONTROL BOARD FOR PHTT	\$836.00
CNTRL BRD-PHTT STD	CONTROL BOARD FOR STANDARD PHTT	\$836.00
CNTRL BRD-TS LCH 4.3 G2	CONTROL BOARD/TOUCHSCREEN 4.3" G2	\$1,310.00
CNTRL JZ	DXL XR01CX CONTROLLER	\$165.00
CNTRL PNL BD AR	BONDED ARBY'S OVERLAY	\$235.00
CNTRL PNL E-AL	ALUMINUM DUAL HEAT CONTROL PANEL	\$162.00
CNTRL PNL F-SCALE DIAL	CONTROL PANEL F-SCALE DIAL FACE	\$8.00
CNTRL PNL HLC 2125	CONTROL PANEL OVERLAY HLC 2125	\$150.00
CNTRL PNL PHT	OVERLAY FOR CLIMATE IQ (PHTT)	\$116.00
CNTRL PNL TS AR	AR OVERLAY TOUCH SCREEN	\$137.00
CNTRL PROBE JZ	PROBE FOR DXL CONTROLLERS	\$33.00
CNTRL SURGE SUPPRESSOR	SURGE SUPPRESSOR,TEMP CONTROLLER	\$11.00
CNTRL-PNL-ALADDIN	CONTROL PANEL OVERLAY FOR ALADDIN	\$120.00
CNTRL-PNL-HUMI-TEMP-AL	ALUM PANEL FOR HUMI-TEMP	\$56.00

Part Number	Description	List Price	Part Number	Description	List Price
CNTRL-REFRIG-6MOD-2	CONTROLLER SLDST HORIZONTAL REF	\$885.00	CSTR 8 R-5	CASTER 8" RIGID MULTI-TERRAIN	\$90.00
COMPR R-134	COMPRESSOR REFRIGERATORS 134	\$863.00	CSTR 8 SB-3 MONO	CASTER 8" SWIVEL MONOPRENE SEMI-PNE	\$135.00
COND PROBE 4AT	CONDUCTIVE PROBE 3.75" ANTI-TWIST	\$285.00	CSTR 8 SB-5	CASTER 8" SWIVEL BRK MULTI-TERRAIN	\$149.00
COND PROBE AT	CONDUCTIVE PROBE 2.125" ANTI-TWIST	\$284.00	CSTR 8 SB-6	CASTER 8" SWIVEL BRAKE SUPER DYNAMI	\$171.00
COND PROBE WASHER	CONDUCTIVE PROBE WASHER	\$62.00	CSTR 82-SB-PPF	CASTER 8" SWIVEL BRAKE EZ ROLL POLY	\$115.00
COND-UNIT-R-134-OVERLOAD	OVERLOAD FOR COND-UNIT-R-134	\$146.00	CSTR-5-S-HTEMP-RACK	HI-TEMP SWIVEL CASTER FOR RACKS	\$191.00
COND-UNIT-R-134-RELAY	-13-15RELAY FOR COND-UNIT-R-134	\$160.00	ELI000-120-A16	ELEMENT 1000 WATT 120 VOLT 16" A	\$118.00
COND-UNIT-R-134-ST-CAPAC	START CAPACITOR FOR CON-UNIT-R-134	\$121.00	ELI000-120-A32	ELEMENT 1000 WATT 120 VOLT 32" A	\$118.00
COND-UNIT-R-404	CONDENSING UNIT 120V 404A 1/2HP	\$1,828.00	ELI000-120-HT	TUBULAR ELEMENT 1000W/120V HUMI	\$165.00
COND-UNIT-R-404-ST-CAP	START CAPACITOR COND-UNIT-R-404	\$139.00	ELI000-220-A16	TUBULAR ELEMENT 1000W/220V A16	\$142.00
CONTACT-2 POLE-120V-40AMP	CONTACTOR RELAY 2-POLE 120V 40A	\$75.00	ELI10-115PH	TUBULAR HEAT ELEMENT 110W 115V PHFR	\$191.00
CONTACT-2POLE-208-240-40	CONTACTOR RELAY 2-POLE 208/240V 40A	\$183.00	ELI10-220PH	TUBULAR HEAT ELEMENT 110W 220V PHFR	\$189.00
CONTACT-2POLE-50 AMP RES	CONTACTOR 2 POLE 50AMP RESISTIVE	\$76.00	ELI250-120-HT	ELEMENT 1250 WATT 120 VOLT 8" HT	\$126.00
CONTACT-3 POLE-240V-30AMP	CONTACT-3 POLE-208-240V-30 AMP	\$98.00	ELI250-220HT	ELEMENT 1250 WATT 220 VOLT 8" HT	\$129.00
CRD GRIP MESH-AL-50-3043	CORD GRIP AL MESH 1/2NPT 30-43 CRD	\$134.00	ELI500-115A	ELEMENT 1500 WATT 115 VOLT 24" HT	\$349.00
CRDSET10-115	CORD 12' 115V 5-15P 14GA 3WR 15AMP	\$57.00	ELI500-120HDC-475	TUBULAR ELEMENT 1500W 120V .475 DIA	\$197.00
CRDSET10-115-59D	14-3 SJTOWA 12' CORD 115V 5-15N 15A	\$56.00	ELI500-120-HT	ELEMENT 1500 WATT 120 VOLT 8" HT	\$126.00
CRDSET10-220	CORD 12' 220V 6-15P 14GA 3WR 15AMP	\$67.00	ELI500-220HT	ELEMENT 1500 WATT 220 VOLT 8" HT	\$192.00
CRDSET-13-250	CORDSET UK 13A/250V UK BS1363A	\$71.00	ELI600-120HT-XL-28	ELEMENT 1600 WATT 120 VOLT 28" HT	\$307.00
CRDSET20-115	CORD 12' 115 VOLT 5-20P 12GA 3 WIRE	\$80.00	ELI750-115HT	TUBULAR HEAT ELEMENT 1750W 120V, HT	\$143.00
CSTR 2 SB-2	2" GREY RUBBER CASTER, SWIVEL W/ BRK	\$22.00	ELI750-220HT	TUBULAR HEAT ELEMENT 1750W 220V, HT	\$128.00
CSTR 3.5 R-5	CASTER 3.5" RIGID HEAVY DUTY	\$75.00	ELI97-120-FOIL HT	ELEMENT 197W 120V FOIL REAR HT	\$102.00
CSTR 3.5 SB-5	CASTER 3.5" SWIVEL BRAKE HEAVY DUTY	\$82.00	EL2000-120-HT	ELEMENT 2000 WATT 120 VOLT 8" HT	\$155.00
CSTR 5 R-2	CASTER 5" RIGID HEAVY DUTY	\$84.00	EL2000-120-HT SCREW LUG	ELEMENT 2000 WATT 120 VOLT	\$188.00
CSTR 5 SB-2	CASTER 5" SWIVEL BRAKE HEAVY DUTY	\$93.00	EL2000-120HT-XL-28	TUBULAR HEAT ELEMENT 2000W 120V, XL	\$304.00
CSTR 52-R-PPF	CASTER 5" RIGID EZ ROLL POLY	\$65.00	EL2000-120PHTT	TUBULAR ELEMENT 2000W 120V, PHTT	\$280.00
CSTR 52-R-PRR	CASTER 5" RIGID MULTITERRAIN	\$80.00	EL2000-120PHTT-2.5	ELEMENT 2000W 120V FOR 2.5" PAN	\$278.00
CSTR 52-SB-PPF	CASTER 5" SWIVEL BRAKE EZ ROLL POLY	\$88.00	EL2000-220HT	ELEMENT 2000 WATT 220 VOLT 8" HT	\$192.00
CSTR 52-SB-PRR	CASTER 5" SWIVEL BRAKE MULTITERRAIN	\$110.00	EL246-120-LH FOIL HT	ELEMENT 246W 120V FOIL LH HT	\$111.00
CSTR 6 R-5	CASTER 6" RIGID CARTWASH CASTER	\$124.00	EL246-120-RH FOIL HT	ELEMENT 246W 120V FOIL RH HT	\$111.00
CSTR 6 SB-3	CASTER 6" SWIVEL BRAKE SEMI-PNEUM	\$135.00	EL254-120-FOIL HT	ELEMENT 254W 120V FOIL BOTTOM HT	\$127.00
CSTR 6 SB-5	CASTER 6" SWIVEL CARTWASH CASTER	\$148.00	EL300-240-9	CARTRIDGE HEATER 300W/240V 9"	\$305.00
CSTR 62-R-PPF	CASTER 6" RIGID EZ ROLL POLY	\$71.00	EL350-120-A16	ELEMENT 350 WATT 120 VOLT 16" A	\$113.00
CSTR 62-R-PRR	CASTER 6" RIGID MULTITERRAIN	\$116.00	EL350-120-PH	ELEMENT 350 WATT 115 VOLT WET PH	\$170.00
CSTR 62-SB-PPF	CASTER 6" SWIVEL BRAKE EZ ROLL POLY	\$107.00	EL350-120-STP-12	ELEMENT 350 WATT 120 VOLT WET STRIP	\$232.00
CSTR 62-SB-PRR	CASTER 6" SWIVEL MULTITERRAIN QUIET	\$151.00	EL-4000-220-SPIRAL	ELEMENT 4000W/220V SPIRAL	\$332.00
CSTR 8 R-3 MONO	CASTER 8" RIGID MONOPRENE SEMI-PNEU	\$174.00	EL500-120-A16	ELEMENT 500 WATT 120 VOLT 16" A	\$118.00

Part Number	Description	List Price
EL500-120-ALUM-MAXI	500W 120V ALUM MAXISTRIP W/TI TERM	\$175.00
EL500-220-A16	ELEMENT 500 WATT 220 VOLT 16" A	\$118.00
EL700-120-A16	ELEMENT 700 WATT 120 VOLT 16" A	\$118.00
EL750-120-HT	TUBULAR ELEMENT 750W/120V HUMI	\$192.00
EL960-120-A16 3 LOOP	3 LOOP TUBULAR ELEMENT 960W/120V	\$155.00
EL-DFST-AC-1	ELEMENT 750W 120V DEFROST AS	\$280.00
EVAP AC	EVAPORATOR COIL COATED 6-ROW	\$775.00
FAN BLOW I15	COOLING FAN MOTOR TUBE AXIAL I15V	\$144.00
FAN BLOW RTH	COOLING FAN MOTOR TUBE AXIAL 220V	\$131.00
FAN PHTT I15	I15V FAN,80 X 80 X 38MM	\$140.00
FAN-IMPELLER	PLASTIC FAN IMPELLER	\$9.00
FAN-RING-8	RING FAN 8" DIA I15V	\$229.00
FILTER-PIPE	FILTER, IN LINE PIPE STYLE 1/4" NPT	\$49.00
FLTR-DRY-BRZ	FILTER DRIER-1/4 ODF SOLDER C-082-5	\$128.00
FS-LP-MID-10AMP	FUSE 10 AMP LOW PEAK MIDGET	\$95.00
GRD FAN	FAN GUARD	\$6.00
GRD FAN EVAP	FAN BLADE GUARD FOR MTR REF/FRZ	\$54.00
GRMT-HT-3-16	SILCONE GROMMET 3/16ID X 7/16OD	\$4.00
GSKT IMCS	MED CELL SIL FOAM GSKT 1X.25X20"PSA	\$16.00
GSKT DR	GASKET BLACK HI-TEMP	\$5.00
GSKT HLDR 47-9	GSKT HLDR ALUM 47.5"	\$24.00
GSKT L SILICONE	SILICONE GSKT EXTRUSION PROFILE L	\$1.00
GSKT MAG2248	GASKET MAGNETIC 22.75X48 R60	\$98.00
GSKT MAG2526	MAG. DOOR GASKET 25.25 X 25.625	\$106.00
GSKT MAG2531	MAG. DOOR GASKET 25.25 X 30.50	\$111.00
GSKT MAG2548	MAG. DOOR GASKET 25.25" X 47.75"	\$139.00
GSKT MAG2550	MAG. DOOR GASKET 25.50"X 50.50", JZ	\$114.00
GSKT PHTT	SILICONE SPONGE 1/16" D/C W/PSA	\$43.00
GSKT RH	GASKET 55 DURO GREY EXTRUSION	\$23.00
GSKT SILICONE EXTRUSION	SILICONE GSKT EXTRUSION PROFILE A	\$1.00
GSKT SWEEP	GASKET SWEEP 37" FOR DUTCH DOORS	\$86.00
GSKT-D-14-750X23-562	SILICONE DR GASKET D 14.75X23.56	\$156.00
GSKT-D-14-75X23-5625	SILICONE DOOR GASKET D 14.75X23.56	\$183.00
GSKT-D-14-75X23-625	SILICONE DOOR GASKET D 14.75X23.625	\$158.00
GSKT-D-24X25-125	SILICONE DOOR GASKET D 24.00X25.125	\$144.00
GSKT-D-24X29-875	SILICONE DOOR GASKET D 24.00X29.875	\$160.00
GSKT-D-27-000X20-258	SILICONE DOOR GASKET D 27X20.258	\$152.00

Part Number	Description	List Price
GSKT-D-28-125X29-5	SILICONE DOOR GASKET D 28.125X29.5	\$169.00
GSKT-D-30-31	SILICONE DOOR GASKET D 30X31	\$160.00
GSKT-MAG25-312X27-812	GASKET MAGNETIC 25.312X27.812	\$78.00
GSKT-MAG25-312X56	GASKET MAGNETIC 25.312X56	\$106.00
GSKT-MAG-26X48	GASKET MAGNETIC 26.125X48.125	\$106.00
HDL-125-AL	HANDLE PUSH ALUMINUM 12.5" LONG	\$20.00
HDL-215-AL	HANDLE PUSH AL 21.5	\$28.00
HDL-PLASTIC 4.75	INJECTION MODLED BLK PLASTIC HANDLE	\$33.00
HDL-PLASTIC 4.75 CVR	COVER PLATE FOR HDL-PLASTIC 4.75	\$23.00
HI-LIMIT 500 DEG	HI-TEMP SNAP DISC 500 DEG. F	\$63.00
HI-LIMIT PHTT	3/4 SNAP DISC T-STAT, MANUAL RESET	\$78.00
HI-LIMIT RTH	HI-LIMIT 500 DEG F. SNAP DISC	\$78.00
HND TL SERVICE NUTDRIVER	SERVICE NUTDRIVER FOR PHTT HINGE	\$78.00
HNG 1216	HINGE NON-RISE ADJ 1-1/8 OFFSET	\$68.00
HNG 1216 SPRING KIT	SPRING KIT FOR 1216 HINGE	\$36.00
HNG COVER 1216	HINGE COVER FOR 1216 HINGE	\$18.00
HNG COVER 214	DOOR HINGE COVER FOR HNG 214	\$16.00
HNG COVER 217	HINGE COVER FOR 217 HINGE	\$22.00
HNG LO BW-L	HINGE LIFT-OFF BTM WING W/PIN LH	\$29.00
HNG L-O FL	HINGE LIFT-OFF FLAT	\$19.00
HNG REFRIG	HINGE FOR RAC-37	\$42.00
HNG SET ANGLE SS	SET ANGLE POSITION HINGE 150 DEG SS	\$49.00
HNG SET ANGLE-2SS	SET ANGLE POSITION HINGE, 150 DEG	\$53.00
HNG-214	DOOR HINGE EDGEMOUNT .875"	\$54.00
HNG-217	DOOR HINGE EDGEMOUNT 1.375" REF	\$83.00
HNG-LIFT-OFF-215	HINGE LIFT-OFF SELF CLOSING 1-3/16	\$114.00
HNG-L-O-BW-R	HINGE LIFT-OFF BTM WING W/PIN RH	\$27.00
INSL FBR 4X60	1" FBRGL INSUL 4'X100' DBL ROLL	\$2.00
INSUL BD CERAMIC	36"X48"X.25" KAWL PM BRD	\$1.00
KNB HI	KNOB HEAT CONTROL 90-190F	\$22.00
KNB H6	KNOB WITH ARROW	\$24.00
KNB H6 SS	KNOB WITH ARROW AND SET SCREW	\$28.00
KNB H7	KNOB NO MARKINGS	\$24.00
KNB INFN	KNOB MOISTURE CONTROL 1-9	\$17.00
LEG SS4	LEGS STAINLESS STEEL ADJ 4"-6"	\$79.00
LT PLT AI	INDICATOR LIGHT AMBER ROUND	\$13.00
LT PLT A-G	INDICATOR LIGHT AMBER GREEN 125V	\$24.00

Part Number	Description	List Price
LT PLT A-G 250	INDICATOR LIGHT AMBER GREEN 250V	\$25.00
LT PLT W-A	INDICATOR LIGHT CLEAR AMBER	\$24.00
LTH DR LK	DOOR LATCH EDGEMOUNT CHROME LOCKING	\$137.00
LTH DR MAG	DOOR LATCH EDGEMNT MAG SMALL BLACK	\$143.00
LTH DR MAG-RH	DOOR LATCH EDGEMOUNT BLACK MAGNETIC	\$154.00
LTH DR SPG	SPRING FOR DOOR LATCH	\$3.00
LTH MAG	DOOR LATCH EDGEMOUNT CHROME MAGNTIC	\$191.00
LTH MAG OFFSET HNDL	CHROME MAGNETIC LATCH,OFFSET HANDLE	\$127.00
LTH PDL ETC	DOOR LATCH PADDLE STYLE 2X3	\$166.00
LTH PDL-STD 125	DOOR LATCH PADDLE 4X5 1 1/4" STUDS	\$159.00
LTH PDL-STD 50	DOOR LATCH PADDLE 4X5 1/2" STUDS	\$156.00
LTH-DR	DOOR LATCH EDGEMOUNT STYLE CHROME	\$112.00
LTH-DR-MAG-MECH	EDGEMOUNT DOOR LATCH MAG/MECH COMBO	\$108.00
MAXI-GUARD-17500-WD-RH-II	1.75" TRANSPORT LATCH - RIGHT SIDE	\$146.00
MAXI-SLIDE	MAXI-SLIDE TRANSPORT LATCH	\$123.00
MIN CHARGE	MINIMUM CHARGE FEE	
MTR BY120 92	MOTOR DUAL SHAFTED 120 VOLT	\$128.00
MTR BY220 93	MOTOR DUAL SHAFTED 220 VOLT	\$140.00
MTR DS 120	MOTOR DUAL SHAFT 120V 60HZ	\$165.00
MTR REF-FRZ	MOTOR FAN EVAPORATOR	\$392.00
MTR RTH	MOTOR 230 VOLT 50/60HZ	\$394.00
NI-4-20 TPF	NUT 1/4-20 TAMPER PROOF	\$3.00
N5-16 TPF	5/16-18 TRI GROOVE TAMPER PROOF NUT	\$5.00
N8-32 CAP	NUT 8-32 ACORN, 18-8	\$1.00
N8-32HXSS	8-32 HEX MACHINE SCREW NUT, 18-8	\$1.00
O-RING-OR018	O-RING 3/4"ID X 1/16" THK SILICONE	\$4.00
PAN 12X20X2.5	FULL SIZE SS PAN, 2-1/2" DEEP	\$109.00
PAN 18X26 PERF	FULL SIZE AL SHEET PAN,PERFORATED	\$147.00
PIPE-DRAIN	PIPE STAND 1"DIA X 2" L - PPS	\$125.00
PL FLSH BLK ABS	PULL BLACK ABS 5.01	\$20.00
PLG-EXPAND-WTR-71-94	RUBBER EXPANDABLE PLUG .71-.98	\$41.00
PN4S	WATER PAN 4X12X1	\$147.00
PRB CH MT	COOK AND HOLD MEAT PROBE	\$350.00
PRB HARNESS 36	36" PROBE HARNESS - T-STAT ELE	\$54.00
PRB MT	MEAT PROBE	\$169.00
PRB MT RTD	RTD MEAT PROBE	\$323.00
PRB MT RTD-2	RTD MEAT PROBE - MOLDED HANDLE	\$174.00

Part Number	Description	List Price
PRB MT-2	MEAT PROBE MOLDED HANDLE	\$167.00
PRB RTD	RTD TEMPERATURE PROBE	\$146.00
PRB RTD 36	RTD THERMOCOUPLE ASSY 36"	\$173.00
PRB RTD T	RTD TEMPERATURE PROBE FOR T-STAT	\$43.00
PRB THERMOCOUPLE	THERMOCOUPLE FOR MEAT PROBE	\$125.00
PROBE-NTC-REF-12	THERMISTOR PROBE	\$137.00
RLY 30AMP DPDT	30AMP PANEL MOUNT RELAY,2 POLE 120V	\$92.00
RLY 30AMP DPDT-FIN	30AMP PANEL MOUNT RELAY,2 POLE 120V	\$75.00
RLY 30AMP-120	30AMP PANEL MOUNT RELAY,2 POLE 120V	\$69.00
RLY PHTT	POWER RELAY 30AMP SPDT 120V	\$122.00
S10-32X.75PHZ	SCRW 10-32X3/4PH FLT STL Z	\$1.00
S10-32X1.50	SCRW 10-32X1.50 PH FLAT HEAD "F"410	\$2.00
S10-32X8 TPF	SCRW 10-32X.5 ROUND TRI GROOVE HD	\$2.00
S10-32X8-75 TPF	SCRW 10-32X.75 ROUND TRI GROOVE HD	\$2.00
S10X12 TPF	SCRW 10x.75 ROUND "A"	\$3.00
S1-4-20 X 1 TP TORX	SCRW 1/4-20 X 1 TORX W/ PIN, 18-8	\$79.00
S14X12 TPF	SCRW 14X.75 TYPE "A", RD TRI GROOVE	\$3.00
S14X14HXZP	SCRW 14x3/4HX"A"ZP-WASHER	\$1.00
S5-16-18X750 TPF	5/16-18X3/4" SCREW,ROUND TRI-GROOVE	\$7.00
S8-32X.75PHZ	SCRW 8-32X3/4PH FLT TYF STL Z	\$1.00
S8-32X1 TPF	SCRW 8-32 X 1" TRI GROOVE ZINC	\$1.00
S8-32X10 CTS	SCRW 8-32x5/8 PH CUT 410	\$1.00
S8-32X375 PH	8-32X3/8 PAN HEAD PHILLIPS MS,18-8	\$1.00
S8-32X8 TPF	8-32X1/2 SCREW,ROUND TRI-GROOVE HD	\$1.00
S8X10HXWHCTS	SCRW8x5/8HX WASH"A"410S	\$1.00
S8X12 TPF SS	SCRW 8X.75 ROUND "A" SS 18-8	\$2.00
SCKT RMVR	TRI-GROOVE SOCKET REMOVER SET	\$164.00
SENSOR - RTD	TEMPERATURE SENSOR RTD	\$143.00
SENSOR - RTH	TEMPERATURE SENSOR RTH	\$128.00
SHLF 19X13	WIRE SHELF 19.5 X 13.3125 SS	\$106.00
SHLF P-80-XL	SHELF XL 25.188X24.625"	\$173.00
SHLF RH-LCH	SHELF WIRE 18.188"X26"	\$82.00
SHLF-1826-SS	SHELF STAINLESS STEEL 18"X26"	\$171.00
SHLF-SS-21X27	SHELF STAINLESS STEEL 21" X 27.5"	\$136.00
SLD ETC195	TRAY SLIDE NICKEL PLATED 19.5" ETC	\$19.00
SLD PH245	TRAY SLIDE NICKEL PLATED PH1826	\$24.00
SLD RH 245	TRAY SLIDE NICKEL PLATED RH	\$23.00

Part Number	Description	List Price
SLD TS 305	TRAY SLIDES FOR 33" DEEP UNITS I633	\$50.00
SLD TS245	TRAY SLIDE NICKEL PLATED I8X26	\$46.00
SLD TS245 - NYLON FINISH	TRAY SLIDE NYLON FINISH I8X26	\$60.00
SLD UHS245	TRAY SLIDE NICKEL PLATED UHS	\$30.00
SLD UHS245 - NYLON FINISH	TRAY SLIDE NYLON FINISH UHS	\$50.00
SLD-PH245-SS	TRAY SLIDE STAINLESS STEEL PH	\$67.00
SLD-PHTT245-SS	TRAY SLIDES PHTT245 SS ELECTRO-POLI	\$65.00
SLD-UHS245-SS	TRAY SLIDE STAINLESS STEEL UHS	\$64.00
SNAP DISC	HI-LIMIT CONTROLS LIMIT LI50	\$23.00
SNAP DISC I50-130	COOL DOWN SNAP DISC FI50 OPEN RISE	\$45.00
SNAP DISC 210-250	HI-LIMIT SWITCH NC	\$23.00
SOLENOID-PHTT	SOLENOID-CONTINOUS DUTY	\$157.00
SPCRI25X.330	HANDLE SPACERS FOR HDL 21 AND I2.	\$8.00
SPNG EXTEN	EXT SPRING 1.75"L .029 WIRE	\$12.00
STD5-16 I8X625	5/16-18 X 5/8 SS WLD STUD,MINI FLNG	\$2.00
STD5-16XICP	5/16 X 1" SS WELD STUD,NO THREAD	\$4.00
STK LTH I	DOOR LATCH STRIKE FOR LTH DR	\$38.00
SWH LQD LVL I-INV	SINGLE LEVEL SWITCH, 2.5" DEEP PAN	\$320.00
SWH MAG REED	MAGNETIC PROXIMITY REED SWITCH I00V	\$58.00
SWH ON-NONE-ON TOGGLE	SWITCH, DPDT 3/4HP I25-250VAC	\$37.00
SWH ON-OFF TOGGLE	NON-LIGHTED DPST 22A/I25V SWITCH	\$24.00
SWH RCK EI	SWITCH NON-LT ROCKER I25/250V 20AMP	\$72.00
SWH RCK HY60	SWITCH NON-LT ON/OFF ROCKER BLK	\$52.00
SWH RCK L EI	SWITCH LIGHTED ROCKER I25V 20 AMP	\$68.00
TAP 8-32	8-32 SPRIAL TAP	\$32.00
THERMISTOR-PROBE	THERMISTOR PROBE NTC	\$92.00
T-METER I00-400 WHITE	THERMOMETER I00-350 WH DL	\$94.00
T-METER HI	THERMOMETER I00-220	\$55.00
T-METER H2	THERMOMETER I00/220F	\$62.00
T-METER LENS COVER	THERMOMETER LENS COVER 2" PRESS-IN	\$7.00
T-METER-I00-400	2"DIAL T-MTR,I00/350 F/C	\$145.00
T-MTR DIG F	DIGITAL THERMOMETER WITH 96" LEADS	\$200.00
T-MTR-DIG-40F-199F	DIGITAL THERMOMETER -40/+199F	\$130.00
T-MTR-DIG-40F-300F	DIGITAL THERMOMETER SOLAR POWER	\$180.00
TP HI-TEMP FOAM	TAPE I" HI-TEMP FOAM ADH BOTH SIDES	\$1.00
TRM 3QC	TERMINAL BLOCK 3QC	\$29.00
TRM 4QC	TERMINAL BLOCK 4QC	\$40.00

Part Number	Description	List Price
TRM BLK DIXELL	TERM BLOCK FOR DXL CONTROLLER	\$8.00
TRM BLK RTH	TERMINAL BLOCK -6 POLES	\$22.00
TRM-HI-TEMP	HI-TEMP .25 FEMALE QC I4-I6AWG	\$3.00
TRM-JMPR-J60I-AC	TERM BLK JUMPER TYPE J60I	\$2.00
TRNS-240-I20-40VA	TRANSFORMER 240V-I20V 40 VA	\$90.00
T-STAT ELE 2	ELEC THERMO HEAT CNTRL VERTICAL IEC	\$300.00
T-STAT ELE H	ELEC THERMOSTAT HEAT CNTRL HORIZON	\$265.00
T-STAT ELE H2	ELEC THERMO HEAT CNTRL HORIZON IEC	\$285.00
T-STAT ELE MOIST 2	MOISTURE BRD ELEC THERMOSTAT IEC	\$223.00
T-STAT HI	THERMOMSTAT HEAT CONTRL 90-190 36"	\$132.00
T-STAT H2	THERMOMSTAT HEAT CONTRL 90-190 72"	\$149.00
T-STAT INFI	THERMOSTAT MOISTURE CONTRL I20 VOLT	\$79.00
T-STAT INF2	THERMOSTAT MOISTURE CONTRL 240 VOLT	\$97.00
T-STAT OVNI	THERMOSTAT HEAT CONTROL I20-240	\$178.00
T-STAT-DEFROST-SL55	THERMOSTAT DEFIRST CONTRL SL55 OPEN	\$24.00
VAPOR AC	CONDENSATE VAPOR PAN I20V 350W	\$225.00
VAPOR AC 2	VAPORIZOR/REMOVEABLE CORD 220V 50OZ	\$199.00
VLV SLND 2-WAY PHTT I20V	2 WAY WATER SOLENOID VALVE, I20V	\$302.00
VLV-EXP-R-BRZ	THERMAL EXPANSION VALVE I/2TON I34A	\$425.00
WATER-PAN-3RD-WHDL	WATER PAN 2.5" X6.75 X	\$104.00
W-FIBER	FIBER WASHER FOR HEAT ELEMENTS	\$8.00
WR HARNESS XROI	WIRE HARNESS DXL CNTRL XR0ICX	\$148.00
WR HT I4WH 250	I4 GA HI-TEMP WIRE,250C 600V WHITE	\$1.00
Z-200-I368	PTST-0709-I0I4-60HA BUMPER ASSY HD	\$509.00
Z-30I-46I8	HEAT BOX BLANK COVER -M ASSY	\$419.00
Z-500-I007	FLOAT BALL CONVERT SI-KFC0004	\$327.00
Z-500-I009	REVCOR-BAY MOTOR RET KIT SI-KFC00I0	\$448.00
Z-500-I0I0	FLOATBALL ELECT RET KIT SI-PHTT000I	\$367.00
Z-500-I0I2	CONVERT ELEC TO MAN KIT SI-UHS000I	\$350.00
Z-500-I0I3	CONVERT ELEC TO MAN KIT SI-UHST000I	\$284.00
Z-500-I039	SI-RH0I CONV T ELAN-MWAVE CNTRL 220V	\$93I.00
Z-500-I040	SI-LCH02 CONV T ELAN-MWAVE CNTR 220V	\$848.00
Z-600-I0I4	HUMITEMP MANUAL CONTROL PANEL I20V	\$326.00
Z-600-I024	HUMITEMP TUNNEL ASSEMBLY I2" R.H.	\$162.00
Z-600-I2I7	ELEMENT 750 WATTS I15 VOLT BNT	\$236.00
Z-600-I2I9	ELEMENT 2000 WATTS 220 VOLT BNT	\$225.00
Z-600-I295	ELEMENT I500 WATTS I15 VOLT BNT	\$125.00


Part Number	Description	List Price	Part Number	Description	List Price
Z-600-1298	ELEMENT 2000 WATTS 115 VOLT BNT	\$171.00	Z-700-1001	DOOR GASKET 22 75 INCH	\$93.00
Z-600-1347	MTU-12 TUNNEL ASSEMBLY 12"	\$156.00	Z-700-1002	DOOR GASKET 47 5 INCH	\$45.00
Z-600-1388	ELEMENT 1500 WATTS 220 VOLT BNT	\$221.00	Z-700-1003	DOOR GASKET 59 5 INCH	\$123.00
Z-600-1481	HLC-4W6-7H FULL SERVICE LXN SNZ GRD	\$1,243.00	Z-700-1010	GASKET ASSEMBLY 27.625"	\$143.00
Z-600-1572	ELEMENT 1000W/115V BENT	\$182.00	Z-700-1014	GASKET ASSEMBLY 50.5"	\$153.00
Z-600-1786	SELF-CLOSING HINGE I2I6	\$104.00	Z-700-1018	GASKET ASSEMBLY 14.5"	\$56.00
Z-600-1876	HLC-4W6 DROP-DOWN TRAY SLD SHLF 12"	\$823.00	Z-700-1019	GASKET ASSEMBLY 23.375"	\$141.00
Z-600-1997	CASTER LEG SS6 ADAPTER WELDMENT	\$128.00	Z-700-1036	DOOR GASKET 29 INCH	\$135.00
Z-600-2040	MOTOR BLWR ASSEM 115/230 REV SNAP	\$427.00	Z-700-1037	GASKET ASSEMBLY 33.25"	\$108.00
Z-600-2065	MOTOR BLWR ASSEM 115/230 REV	\$411.00	Z-700-1041	GASKET ASSEMBLY 23.25"	\$104.00
Z-600-2403	JZ-HOT CONTROLLER PROGRAM ASSY	\$196.00	Z-700-1062	GASKET ASSEMBLY 28.75"	\$83.00
Z-600-2404	JZ-COLD DIXELL CONTROLLER PROGRAM	\$181.00	Z-700-1108	GSKT HLDR 20-6 @ STD	\$95.00
Z-600-2409	HLC-SL-1826 CNTRL PROGRAM ASSY	\$196.00	Z-700-1109	GSKT HLDR 20-6 @ 14.5 SYM	\$93.00
Z-600-2416	CSTR 2 SB-2 ADAPTER ASSY	\$60.00	Z-800-1376	HHC-CC-RA-202 MANUAL CONTROL ASSY	\$278.00
Z-600-2518	FAN BLOW 115 WITH CRDSET FAN	\$155.00	Z-800-2042	PHTT SENSOR MOUNT PLATE ASSY	\$414.00
Z-600-2636	PHTT-6 WATER PAN ASY AUTO FILL BOC	\$176.00	Z-800-2585	PHU ELECTRONIC CNTRL ASSY G 120V	\$762.00
Z-600-2998	PHTT-6 KFC LEXAN ASSY W/ 1" HOLE	\$300.00	Z-800-2587	MTU ELECTRONIC CNTRL ASSY G 120V	\$750.00
Z-600-3115	PHTT-5P-KFC LEXAN ASSY 1" HOLE	\$392.00			
Z-600-3347	PHTT WATER AUTO FILL ASSY	\$574.00			
Z-600-3589	F THERMISTOR PROBE AND NYLON CLIP	\$141.00			
Z-600-3850	PHTT SENSOR NO T PROBE SERVICE KIT	\$352.00			
Z-600-3966	BLWR-240-50 WITH SNAP DISC	\$388.00			
Z-600-3979	MACHINED PPS PIPE ASSY	\$177.00			
Z-600-4073	BLWR-120-60 KIT	\$347.00			
Z-600-4497	TST-19SL-TB CNTRL PROGRAM ASSY	\$179.00			
Z-600-4680	EVAP TL12AG MTR REPLACEMENT ASSY	\$462.00			
Z-600-4755	LEG SS4 TIG WELD ASSY	\$92.00			
Z-600-5389	LCH-6-G2 STACKING KIT	\$183.00			
Z-600-5476	LET-SS4-FLNGFT WITH ADAPTER PLATE	\$158.00			
Z-600-6018	JZH-6UBT RACK FOR 4" PAN 4.5" SPCNG	\$574.00			
Z-600-6040	PHTT-4 CSTR 2 ADAPTER ASSY EXTEN	\$102.00			
Z-600-6113	LCH-1220-4 SILICONE PROBE RTD ASSY	\$143.00			
Z-600-6113	LCH-1220-4 SILICONE PROBE RTD ASSY	\$139.00			
Z-600-6151	MTR BY120 92 SERVICE ASSY	\$185.00			
Z-600-6152	MTR BY220 93 SERVICE ASSY	\$196.00			
Z-600-6682	E-1500 ERGONOMIC HANDLE RETOFIT PP	\$375.00			
Z-600-7243	DOLLY SLIDING LATCH ASSY	\$246.00			



www.fweparts.com

FOOD WARMING EQUIPMENT COMPANY, INC.
5599 HWY. 31 W. Portland, TN 37148
800-222-4393 | WWW.FWE.COM | SALES@FWE.COM

COOK | HOLD | TRANSPORT | SERVE | REFRIGERATION | BARS

A row of six circular social media icons: Facebook (f), Twitter (bird), YouTube (play button), Instagram (camera), LinkedIn (in), and Pinterest (p).

We reserve the right to change specifications, model numbers, part numbers, descriptions, or photographs. Errors are subject to correction. All rights reserved.
© 2020 FWE Food Warming Equipment Company, Inc.
Version PPL0120