

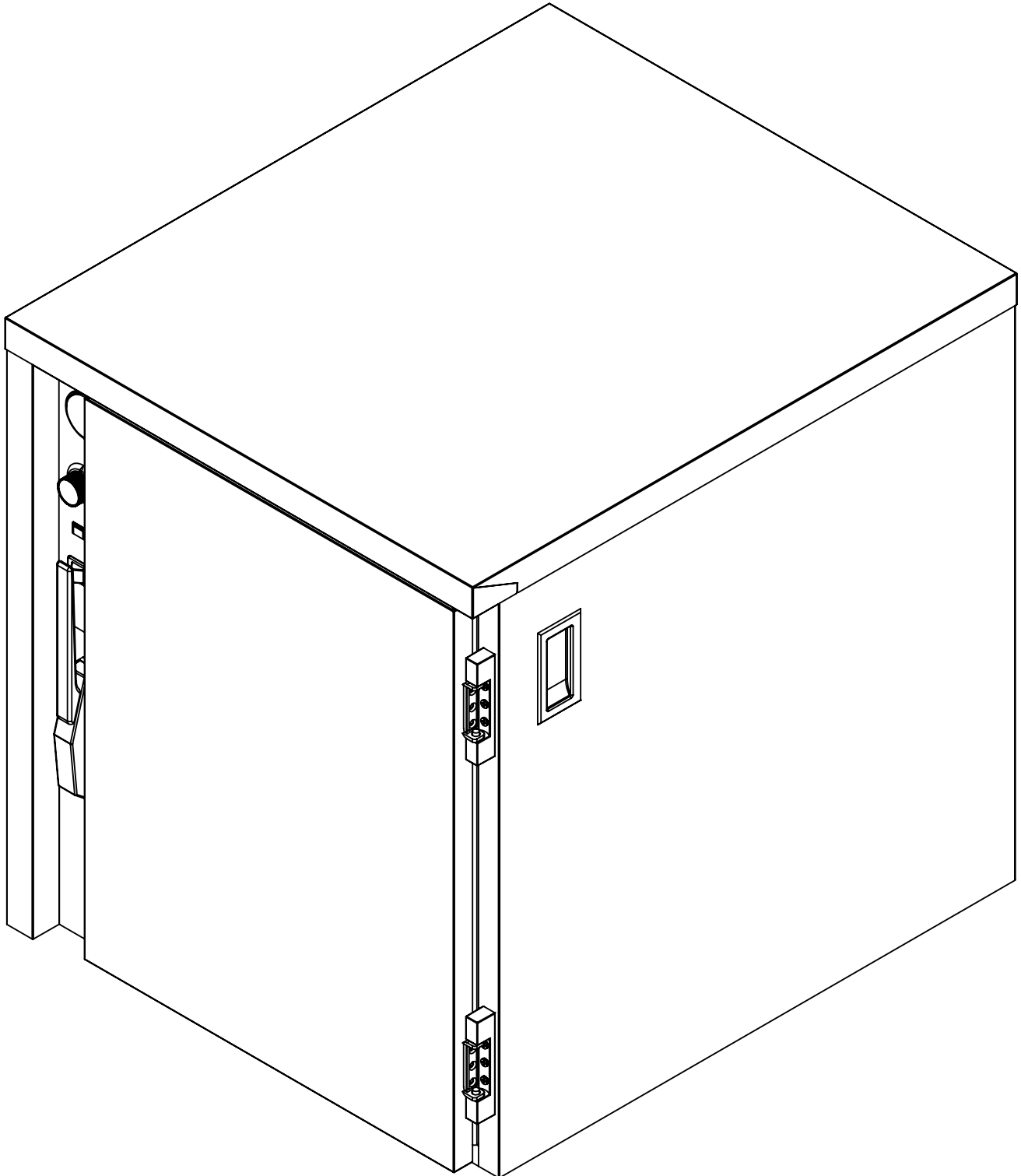


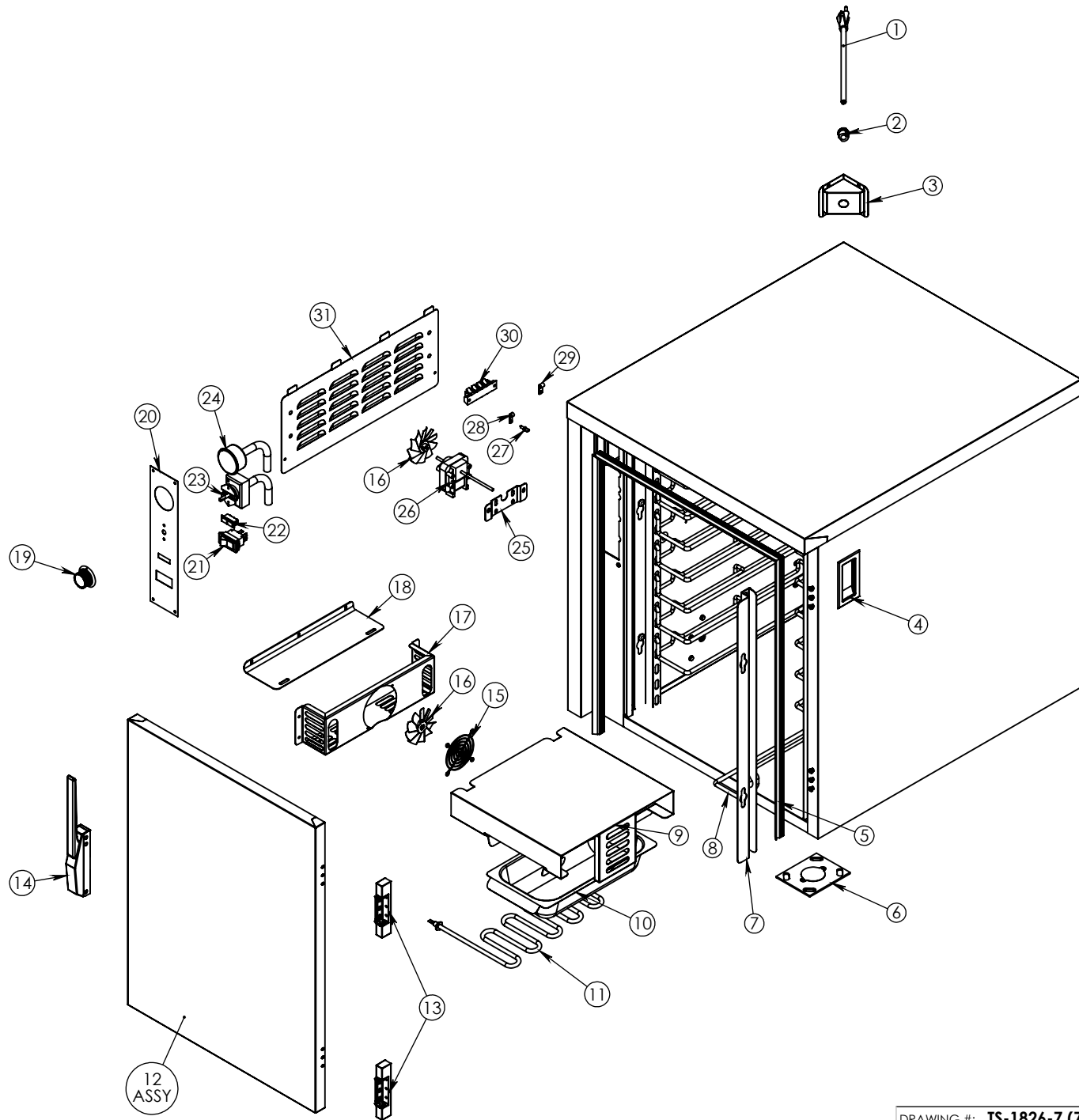
5599 Highway 31 West
Portland, TN 37148
(615) 325-2774

TS-1826-7 (7-11)

Pg.1 . TITLE PAGE Pg.3 . TS-1826-7 7-ELEVEN BOM

Pg.2 . TS-1826-7 7-ELEVEN





DRAWING #: **TS-1826-7 (7-ELEVEN)**

DESCRIPTION: **TRAY SERVER 18X26**

DRAWN BY: AL

LAST SAVED BY: andrew82

ITEM NO.	QTY.	PART NO.	DESCRIPTION
1	1	CRDSET10-115	CORD 12' 115V 5-15P 14GA 3WR 15AMP
2	1	BSH STRN 3	STRAIN RELIEF FOR 15 AMP CORD
3	1	69729	HUMI TRI-CORD BRCKET DD .672X .750
4	2	PL FLSH	HANDLE RECESSED HAND GRIP
5	1	GSKT-D-27-025X20-574	SILICONE DR GASKET D 27.025X20.574
6	4	Z-600-4523	1.25 ROLLER ASSEMBLY
7	4	4027	TS-1826-7 UPRIGHT
8	14	SLD TS245	TRAY SLIDE NICKEL PLATED 18X26
9	1	58408	HEAT SHIELD USE WITH H20 PAN
10	1	WATER-PAN-3RD-WHDL	WATER PAN 2.5" X6.75 X
11	1	EL1250-120-HT	ELEMENT 1250 WATT 120 VOLT 8" HT
12	1	Z-301-3917 (INCLUDES 13 & 14)	TS-1826-7 DOOR ASSY EDG/EDG RH
13	2	HNG-214	DOOR HINGE EDGEMOUNT .875"
14	1	LTH-DR	DOOR LATCH EDGEMOUNT STYLE CHROME
15	1	GRD FAN	FAN GUARD
16	2	BLD FAN AL	FAN BLADE 3" ALUMINUM
17	1	4011	HUMITEMP BLOWER HOUSING
18	1	4041	HUMITEMP BLOWER LID
19	1	KNB H6	KNOB WITH ARROW
20	1	CNTRL-PNL-HUMI-TEMP-AL	ALUM PANEL FOR HUMI-TEMP
21	1	SWH RCK E1	SWITCH NON-LT ROCKER 125/250V 20AMP
22	1	LT PLT A-G	INDICATOR LIGHT AMBER GREEN 125V
23	1	T-STAT H1	THERMOMSTAT HEAT CONTRL 90-190 36"
24	1	T-METER H1	THERMOMETER 100-220
25	1	80610	BRACKET MOTOR MNT FOR BAY MTR
26	1	MTR BY120 92	MOTOR DUAL SHAFTED 120 VOLT
27	2	S8X8THUM	SCRW #8x.5TY.A SS T32-5020
28	3	CLP-AL1-4	CLAMP 1-4" ALUM
29	2	CLP-AL3-8	CLAMP 3-8" ALUM
30	1	TRM 4QC	TERMINAL BLOCK 4QC
31	1	53454	HUMITEMP LOUVER PANEL W/TABS



DRAWING #: **TS-1826-7 (7-ELEVEN)**

DESCRIPTION: **UNIVERSAL SERVER**